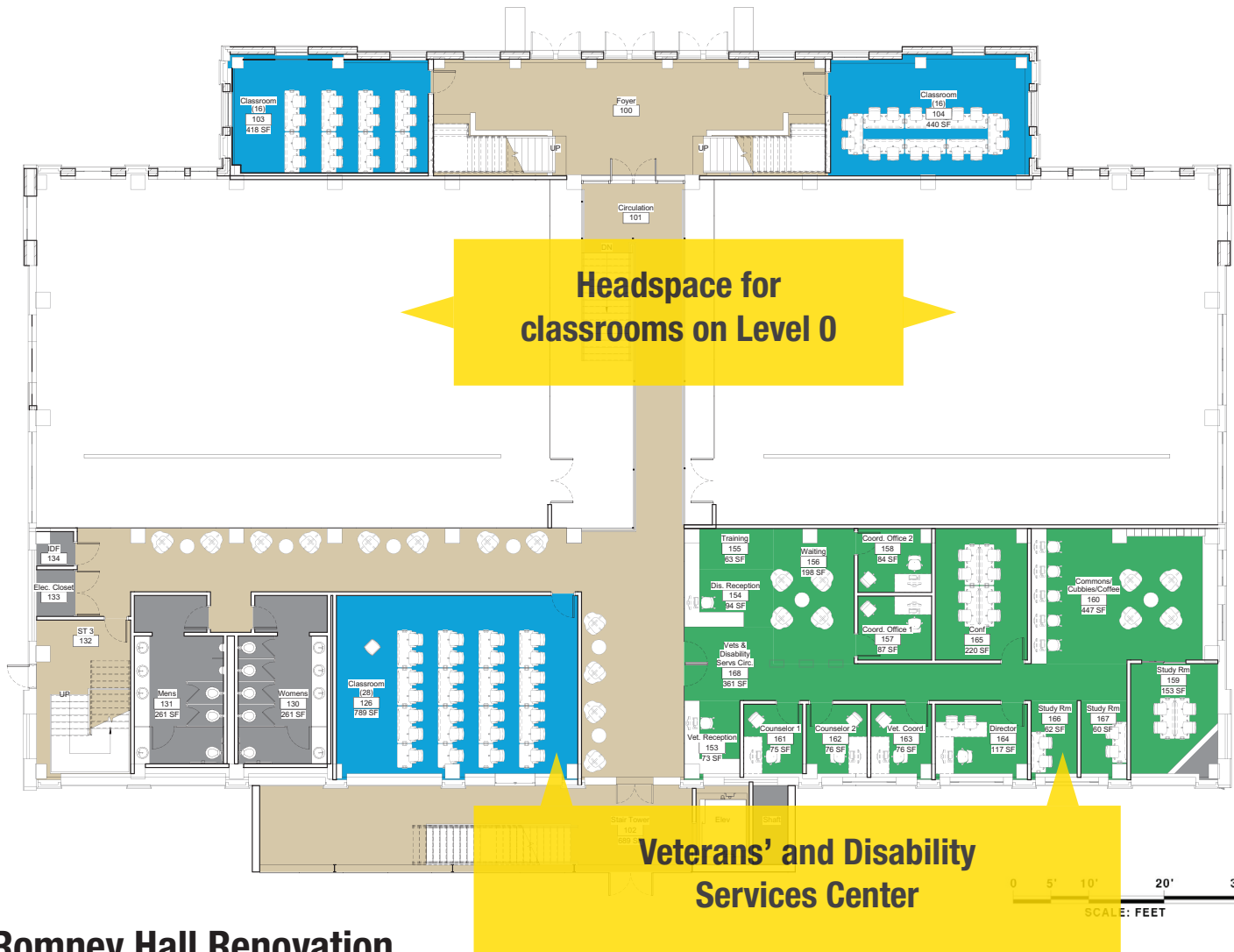


# Level 0 | Romney Hall Renovation

NOVEMBER 28, 2016

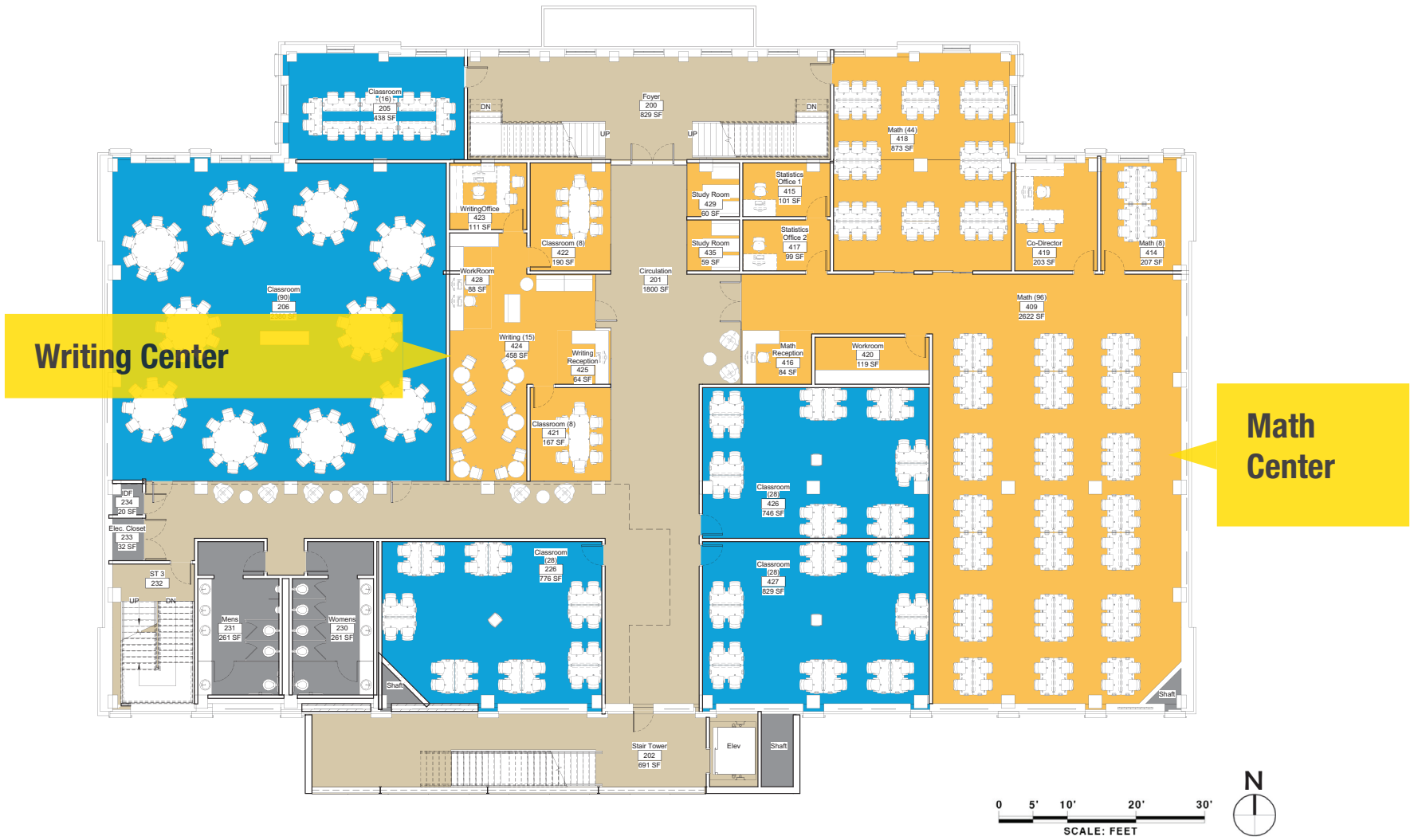


# Level 1 | Romney Hall Renovation

NOVEMBER 28, 2016

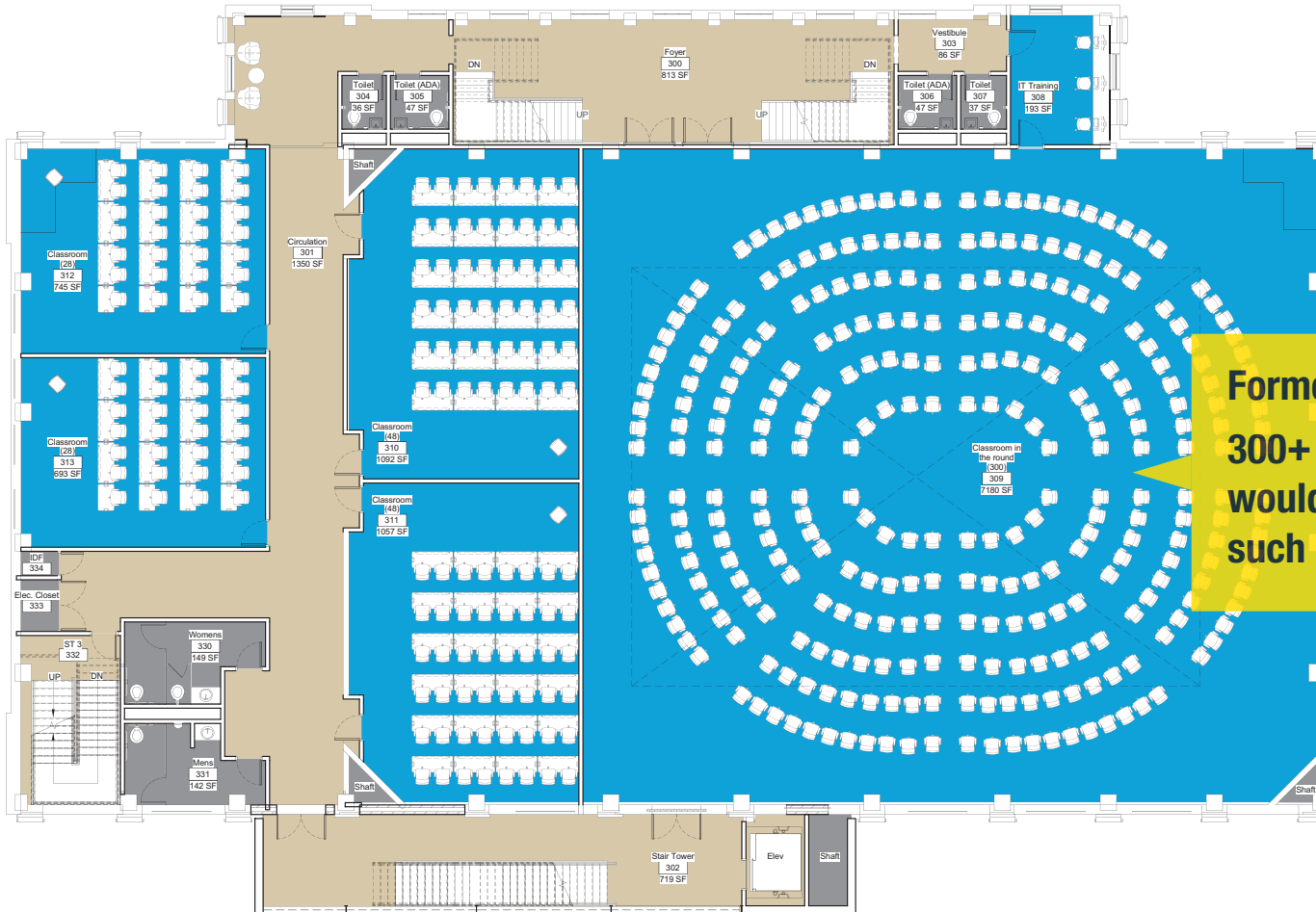


ARCHITECTS ENGINEERS



# Level 2 | Romney Hall Renovation

NOVEMBER 28, 2016



**Former Gym Floor**  
**300+ seat classroom**  
**would be only second**  
**such on campus**

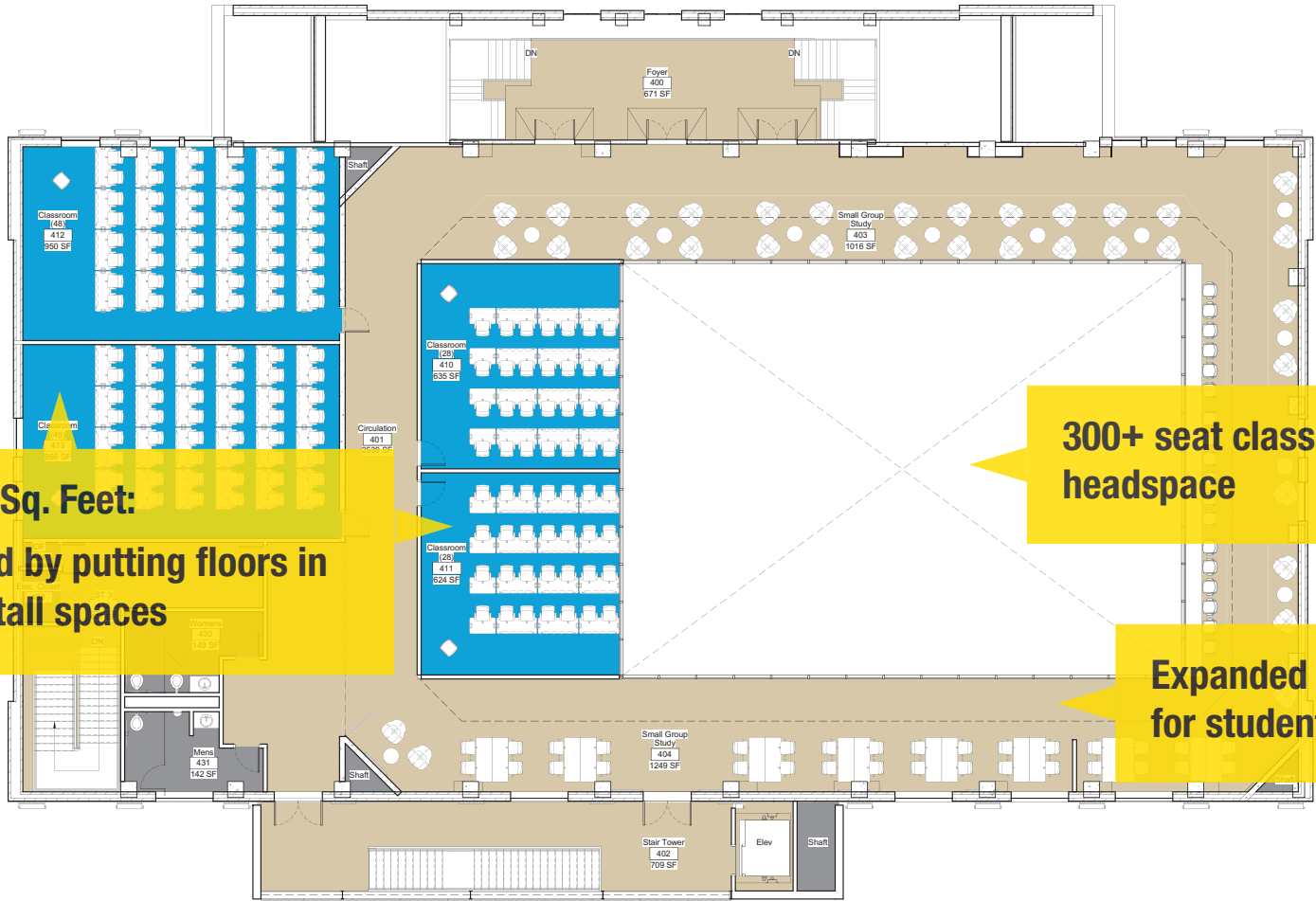


# Level 3 | Romney Hall Renovation

NOVEMBER 28, 2016



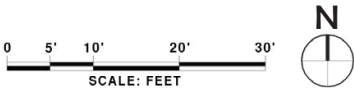
ARCHITECTS ENGINEERS



**All New Sq. Feet:  
Captured by putting floors in  
2-story tall spaces**

**300+ seat classroom  
headspace**

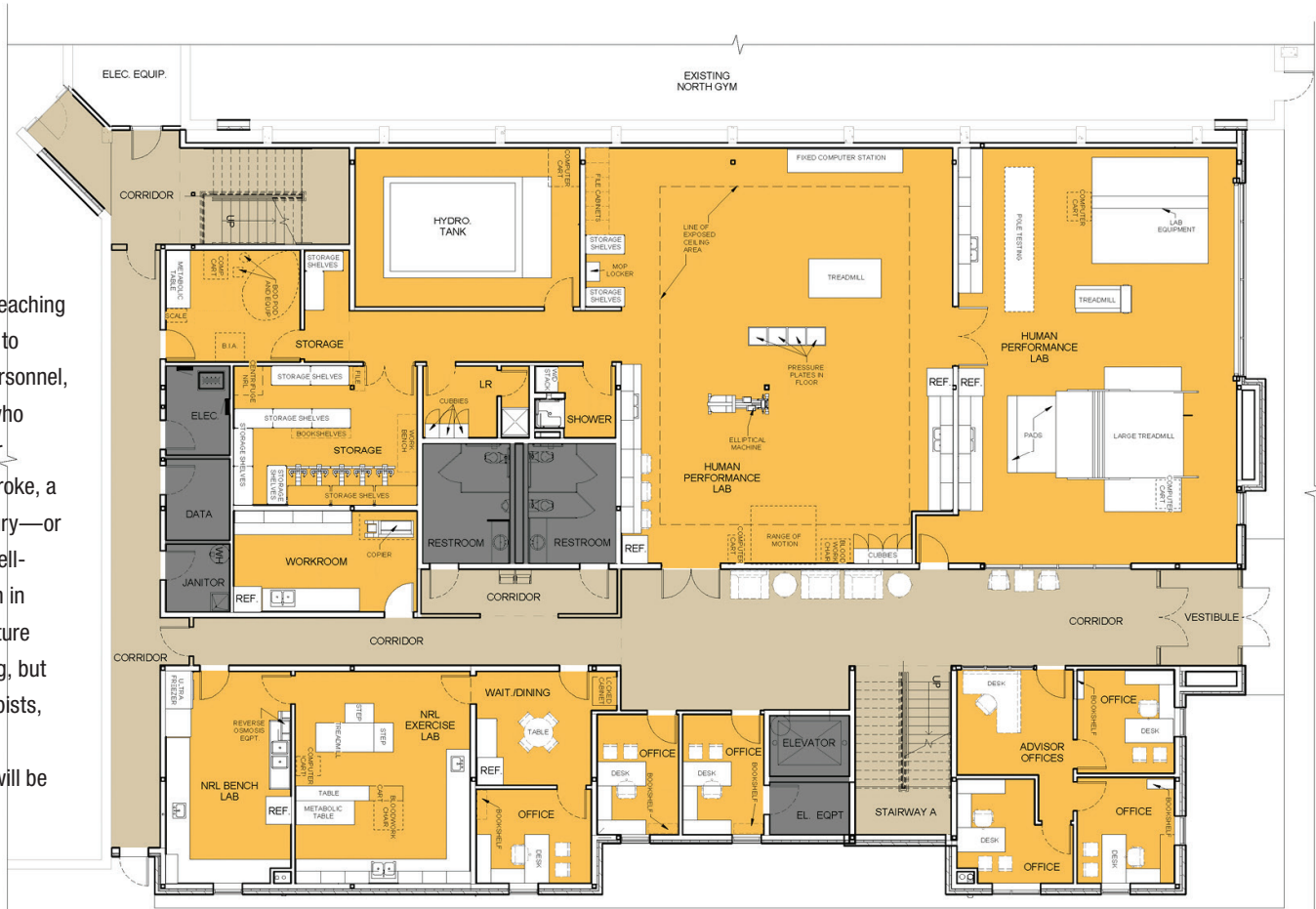
**Expanded mezzanine  
for student study space**



**Level 4 | Romney Hall Renovation**

NOVEMBER 28, 2016

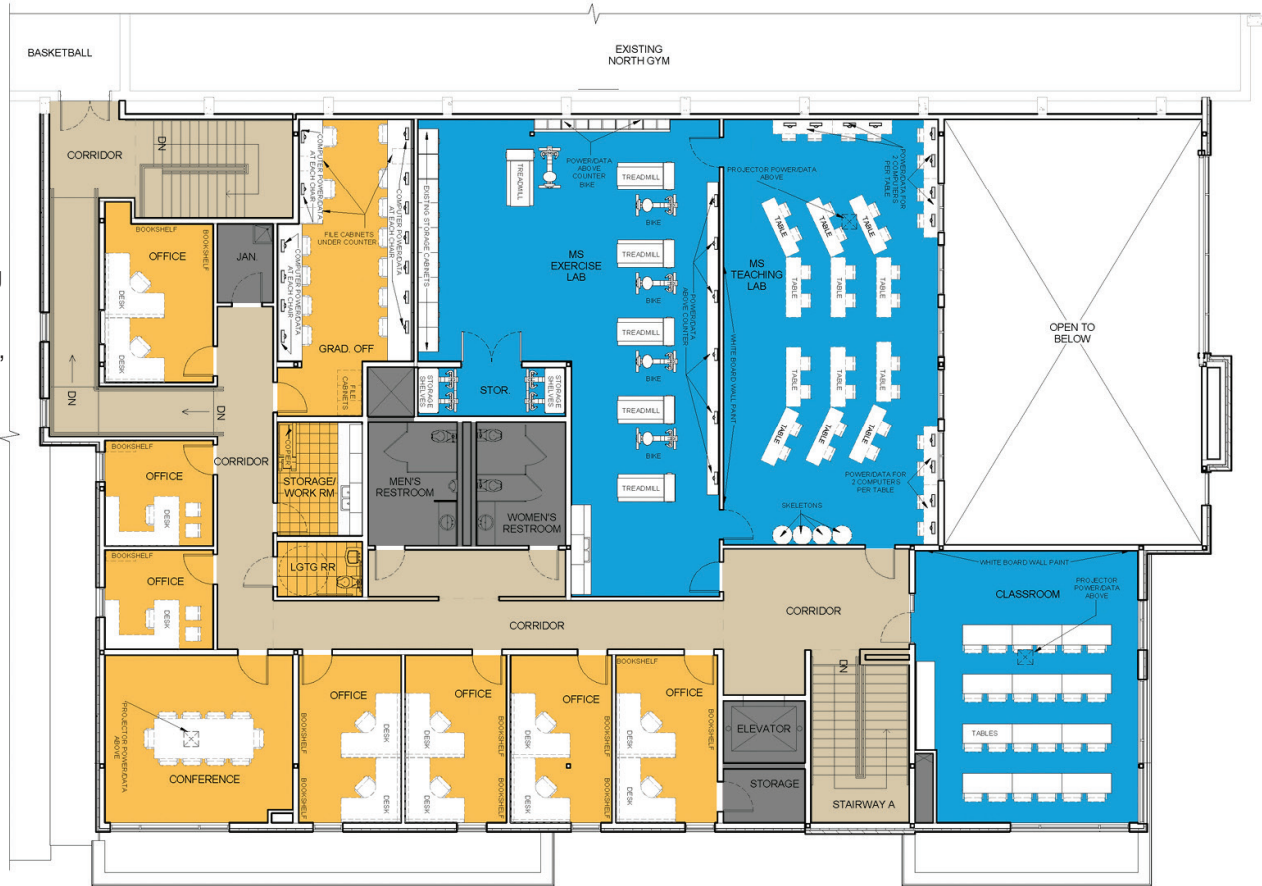
This facility will be used for teaching and research that is relevant to athletes, hunters, military personnel, as well as everyday people who are recovering from illness or injury—whether that be a stroke, a broken hip, or an athletic injury—or just trying to improve their well-being. Teaching and research in this facility helps prepare future health professionals including, but not limited to, physical therapists, occupational therapists, and physicians; and others who will be employed in health care.



**Preliminary**  
**Level 1 | College of Education, Health & Human Development Addition**

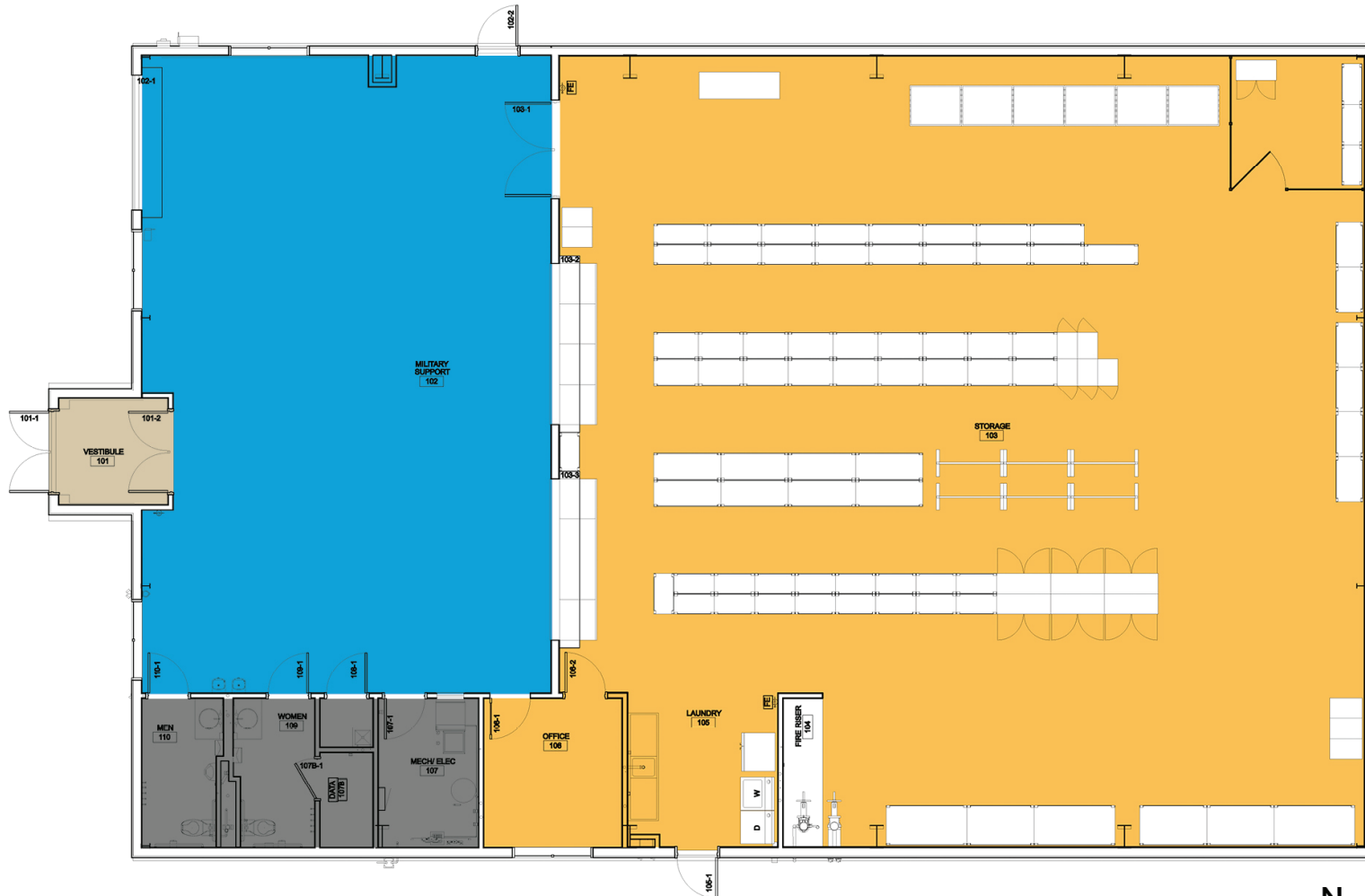
NOVEMBER 28, 2016

This facility will be used for teaching and research that is relevant to athletes, hunters, military personnel, as well as everyday people who are recovering from illness or injury—whether that be a stroke, a broken hip, or an athletic injury—or just trying to improve their well-being. Teaching and research in this facility helps prepare future health professionals including, but not limited to, physical therapists, occupational therapists, and physicians; and others who will be employed in health care.



# Preliminary Level 2 | College of Education, Health & Human Development Addition

NOVEMBER 28, 2016



# Preliminary ROTC Equipment Storage Facility or Incorporated Space

NOVEMBER 28, 2016



ARCHITECTS ENGINEERS