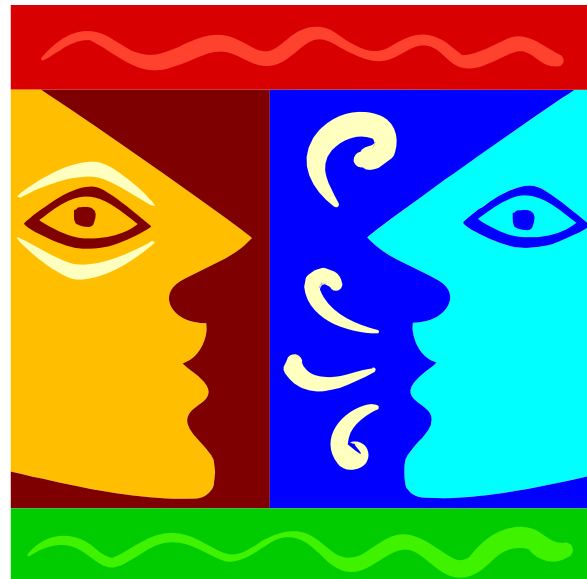

Actively Engaging Students: *Let's Hear Their Voice*

Come join a lively interactive question and answer luncheon. A diverse student panel from various MSU colleges will share their views on how best to meaningfully engage your students in the teaching and learning experience.



moderated by

Dan Moshavi • Dean, College of Business

Looking for someone to work with you individually on teaching?

The Teaching Help Desk has faculty who are available for consultation on various topics such as course design, test development, grading strategies, and more. Contact Chas Pinkava at tlc@montana.edu or 994-5572.

Tuesday, Nov. 17, 2009

SUB Ballroom C

Lunch Served: 12:00 noon

Discussion: 12:15-1:15 p.m.

Please RSVP to annea@montana.edu
by Monday, Nov. 16, 2009

Please note: Due to the format of the workshop, the number of participants will be limited to 30.