

MACDEP NEWS

MONTANA ASSOCIATION OF COMMUNITY DEVELOPMENT EXTENSION PROFESSIONALS

October 2011

Reports & Resources

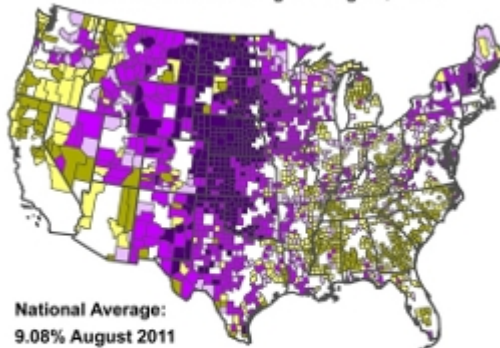
Low Unemployment in Rural Counties

The Daily Yonder | [READ STORY](#)

The rural unemployment rate continues to remain below the national average in most rural counties.

Rural Employment, August '11

Six out of ten rural counties had unemployment rates below the national average in August, 2011



National Average:
9.08% August 2011

- High Unemployment: 12% to 22.3% (276 counties)
- Above Average: 9.1% to 11.9% (522 counties)
- Below Average: 8% to 9.08% (273 counties)
- Low Unemployment: 5% to 7.9% (618 counties)
- Very Low Unemployment: Under 5% (338 counties)

President's Corner

We are happy to announce the [2012 Rural Community Conference](#) will take place May 15-16 at the MSU Campus in Bozeman, MT. We are now planning keynote and session speakers, financial sponsors and other special events. Stay tuned for more info.

The deadline for submission of abstracts to the 2012 [Community Development Society](#) Annual Conference is October 31, 2011. The CDS Conference will take place July 21-25, 2012 in Cincinnati, Ohio. Abstracts involving partnerships between practitioners and academics are especially encouraged.

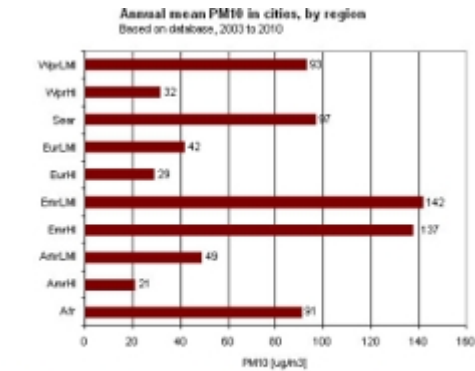
-Paul Lachapelle
MACDEP President

Upcoming Events

Air Pollution in Cities

World Health Organization | [READ STORY](#)

A new report by the WHO compares air pollution in cities. The figure below compares the PM10 levels (pollutant particles smaller than 10 microns) by region.



Afr: Sub-Saharan Africa; Amr: Americas; Eme: Eastern Mediterranean; Eur: Europe; Sear: South-East Asia; Wpr: Western Pacific; HI: High Income; LM: Low and middle income; PM10: Fine particulate matter of 10 microns or less.

Thinking About Public Spaces

Planetizen | [READ STORY](#)

This article examines what elements make up great public spaces.



Trends in Higher Education

Daily Good | [READ STORY](#)

This infographic examines trends in higher education over the last 10 years.

MSU Fall Career Fair

October 6th, Bozeman
Sponsor: MSU

Business Financial Management Workshop

October 19-20, Butte
Sponsor: Headwaters RC&D

The Northwest Solar Summit

November 7-8, Bellevue, WA
Sponsor: Puget Sound Energy

SSTI Annual Conference: Innovative Economies, Creating Our Future

November 8-9, Columbus, OH
Sponsor: State Science and Technology Institute

Grants, Awards & Jobs

Healthy, Educated Workforce for Montana Initiative

Deadline: October 26, 2011
Funder: Blue Cross Blue Shield

Grants to Support Environment, Education, Human Services and Other

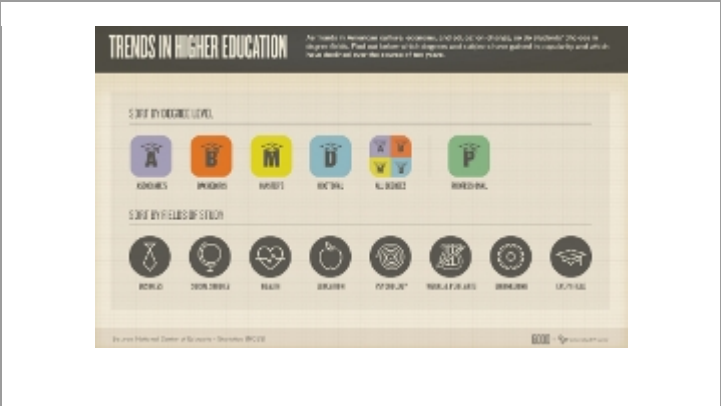
Deadline: November 1, 2011
Funder: The Lawrence Foundation

Grants for Research on Value and Impact of US Arts Sector

Deadline: November 8, 2011
Funder: National Endowment for the Arts

Impact Analysis Grants

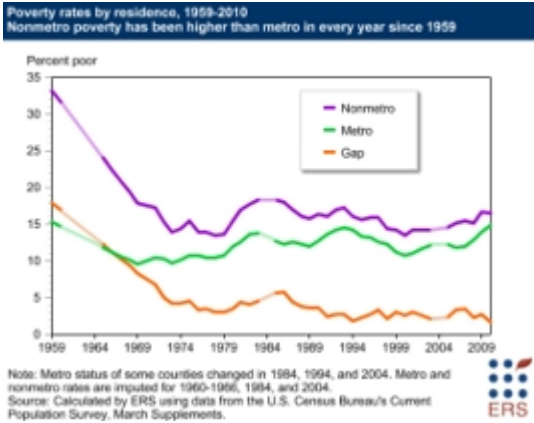
Deadline: Ongoing
Funder: Northwestern Energy



Rural/Urban Poverty Gap Decreases

[The Daily Yonder](#) | [READ STORY](#)

The poverty gap between rural and urban Americans is at its lowest in 50 years.



Recession: Perception Versus Reality

[Daily Good](#) | [READ STORY](#)

This infographic shows that Americans hardest hit by the recession are more likely to be satisfied with the state of the economy.

National/International News

Environmentalists Question Biofuel

Seattle Times; Sept 29

Study: Workers' Insurance Premiums Rise

Denver Post; Sept 28

Colorado City Tests New Water Rights Approach

Durango Herald; Sept 25

Tax Credit Spurs Biodiesel Production

Los Angeles Times; Sept 19

Colorado County Embraces National Breakfast Boom

Boulder Daily Camera; Sept 18

Manufacturing Declines in US

New York Times; Sept 10

Farmland Conservation Program Under Attack

High Country News; Sept 5

Montana News

Yellowstone Temperatures Highest Ever

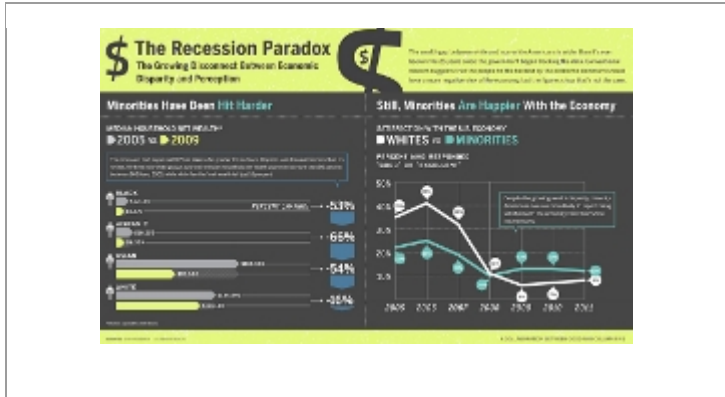
Bozeman Daily Chronicle; Sept 28

Developers Begin Projects in Montana's Newest Resort Town

Flathead Beacon; Sept 27

Montana Valley Embraces Renewable Energy

Missoula Independent; Sept 22



Study: Great Falls Has Shortest Commute Time in Nation
Great Falls Tribune; Sept 22

Four Montanans Make Forbes 400 List
Missoula Independent; Sept 21

Montana County Examines Population Increase
Great Falls Tribune; Sept 17



MSU Extension Community Development | Wilson Hall 2-117 P.O. Box 172240 | Bozeman, MT 59717-2240
Tel: (406) 994-3620
Back issues of the MACDEP E-news are available [here](#)
To subscribe to the Montana CD E-Newsletter, send a request to: commdev@montana.edu